

cornerstone



double sections



Scan on your Mobile Device
to get your Digital Brochure



www.modulinepenticton.ca

Model 286CO5601 - Hawkins

Image on the cover is shown with options:

- 20' Dormer with Fiber Cement Shakes & Web
- 6/12 Roof Pitch
- Fiber Cement Siding w/ Faux Stone
- Wolfe Creek Windows



Cornerstone Double Sections

Standard Features and Specifications

GENERAL CONSTRUCTION					
Built to Code	CSA Z-240 Zone 4,5				
Snow load	94psf/4.53kpa GSL 52psf/2.49kpa Design Load				
Insulation	Ceiling: R40 Walls: R22				
	Floor: R33 (Deleted with Foundation/Basement Option)				
Floor Joist	24 Wide 2x8	27 Wide 2x8	28-6 Wide 2x10	30 Wide 2x10	31-4 Wide 2x10
Decking	5/8" T&G OSB				
Roof Pitch	24 Wide 2.5/12	27 Wide 2.5/12	28-6 Wide 4/12	30 Wide 4/12	31-4 Wide 4/12
Roofing	Architectural Shingle				
Eaves	24 Wide	27 Wide	28-6 Wide	30 Wide	31-4 Wide
	Front	16"	16"	16"	16"
	Side	16"	12" Fixed	12" Pullout	12" Pullout
Rear	16"	16"	16"	16"	16"
Exterior Walls	8'				
	2x6				
Interior Walls	2x4				
	Vinyl Covered Drywall Panel				
Ceiling	Textured Drywall				
	24 Wide	27 Wide	28-6 Wide	30 Wide	31-4 Wide
	Vault Throughout			Flat	Flat
Siding	Maintenance Free Vinyl Lap				
Fascia	White 8" Smart Trim				
Windows	Double Low E, Argon, PVC w/ Vinyl sills. Cordless Cellular Shades (excludes obscured & transoms)				
Doors	2 Panel Insulated with Dead Bolt. Peep hole at Front				
	36" Front		32" Rear		
Porch	Decorative Coach Light at all entrances (ex porch)				
	Covered with Gable Roof (plan specific) & Pot Light(s)				

SPACIOUS BATHS	
Ceramic Tile Backsplash	
Vanity Mirror with Bar Light	
One-Piece Fiberglass Tub/Shower with Single Lever Faucet	
Power Bath Fan on Separate Switch	
GFI Receptacle	
Comfort Height, Dual Flush Toilet	
Wall Mounted Over John Cabinet	
Shower Rod & Curtain	

UTILITY SERVICES	
Electrical Service	100 AMP
Heating	96% High Efficiency 2 stage Gas Furnace, A/C Ready
Water Heater	40 Gallon Electric
Communication Outlets	(1) Primary Bdrm, (1) Living Room
Smoke & CO2 Detectors per code	
Wired, Plumbed & Vented for Washer & Dryer	
Shut Off Valves at all Sinks	
Exterior Frost Free Tap	
Exterior GFI Electrical Outlet	
Heat Tape Plug	
Freezer Outlet (plan specific)	
Continuous Whole House Fan	

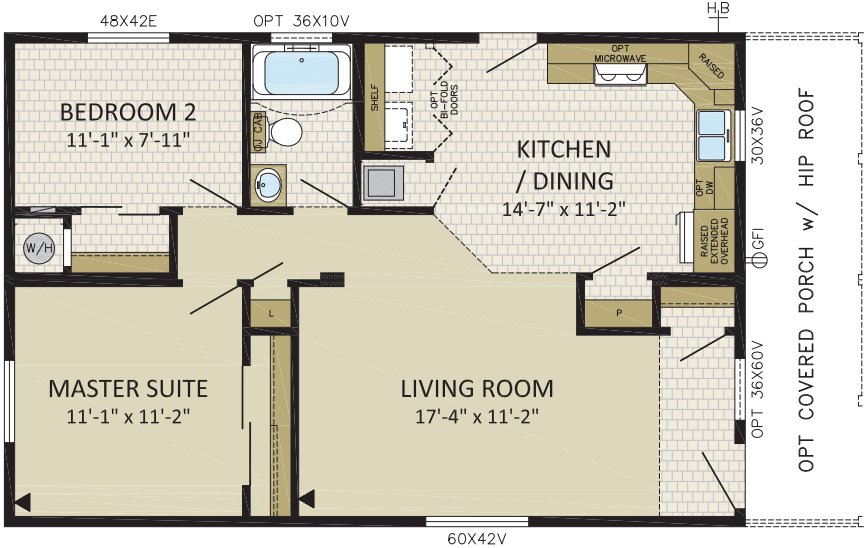
TASTEFUL INTERIORS	
Flooring	Carpet: Primary Bedroom, Living Room, Hall, Gathering
	Quality Cushioned Linoleum: All other areas
Designer Glass Light Fixtures	
Prefinished Interior Doors	
Double Rod in Primary Bedroom Closet	
Linen Closet (plan specific)	
Utility Room Shelf	

BRIGHT, BEAUTIFUL KITCHENS	
European Deluxe Cabinetry with Crown Moulding	
Kitchen Island (plan specific)	
Raised & Extended Fridge Cabinet	
Ceramic Tile Backsplash	
Double Stainless Steel Kitchen Sink	
Chrome Single Handle Pull Out Faucet	
Window over Kitchen Sink (plan specific)	
Exterior Vented Range Hood with Light	
Fridge Opening 36"x72"	
18 cu ft, 2 Door Frost Free Refrigerator	
30" Electric Range	

10 Year Warranty

2023.2 spec

**24'
WIDES**



CANTON
 2 BDRMS, 1 BATH
24CO3604
 24' x 36' | 864 sqft

IMAGE SHOWN WITH OPTIONS:

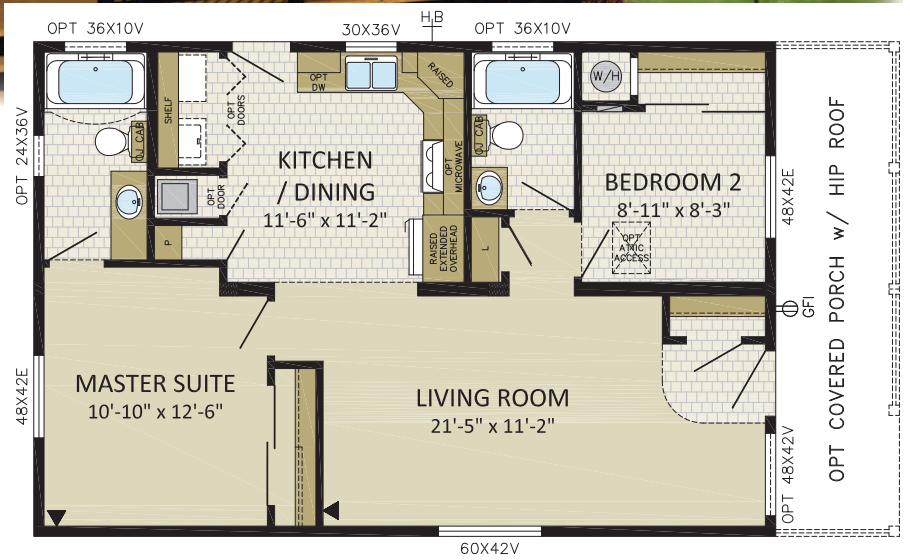
- 3/4 STAR FRONT DOOR
- OPTIONAL COVERED PORCH WITH HIP ROOF
- FIBER CEMENT SIDING

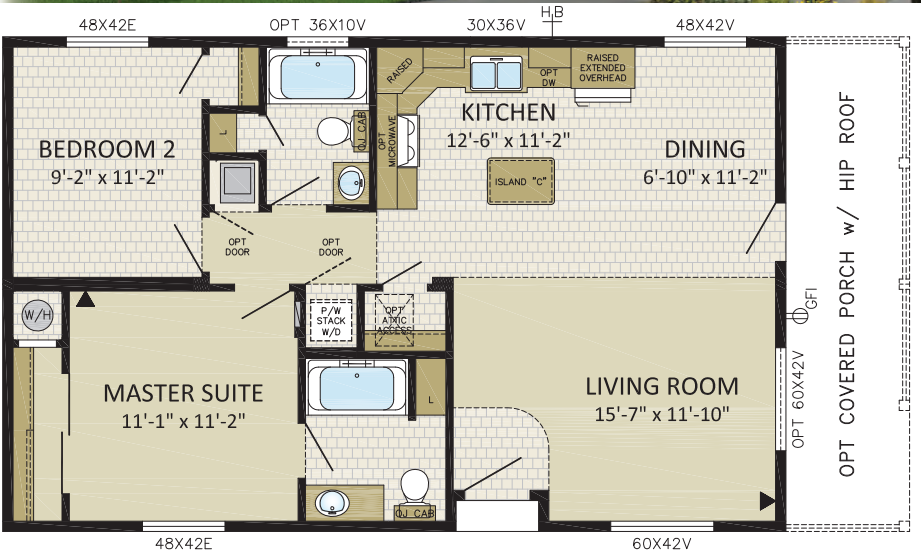


CAPELLA
 2 BDRMS, 2 BATHS
24CO3605
 24' x 36' | 864 sqft

IMAGE SHOWN WITH OPTIONS:

- VICTORIA FRONT DOOR
- OPTIONAL COVERED PORCH WITH HIP ROOF
- FIBER CEMENT SIDING





CAYLEY
 2 BDRMS, 2 BATHS
24CO3801
 24' x 38' | 912 sqft

IMAGE SHOWN WITH OPTIONS:

- 9-LITE FRONT DOOR
- 12' DORMER
- 8' BOX BAY
- OPTIONAL COVERED PORCH W/ GABLE ROOF
- WOLFE CREEK WINDOWS IN LR & MS



COLONEL
 3 BDRMS, 2 BATHS
24CO4001
 24' x 40' | 960 sqft

IMAGE SHOWN WITH OPTIONS:

- STAR LIGHT FRONT DOOR
- 8' DORMERS & BOX BAYS W/ FIBER CEMENT SHAKES
- WOLFE CREEK WINDOWS IN MS, LR & BR#2
- FIBER CEMENT SIDING

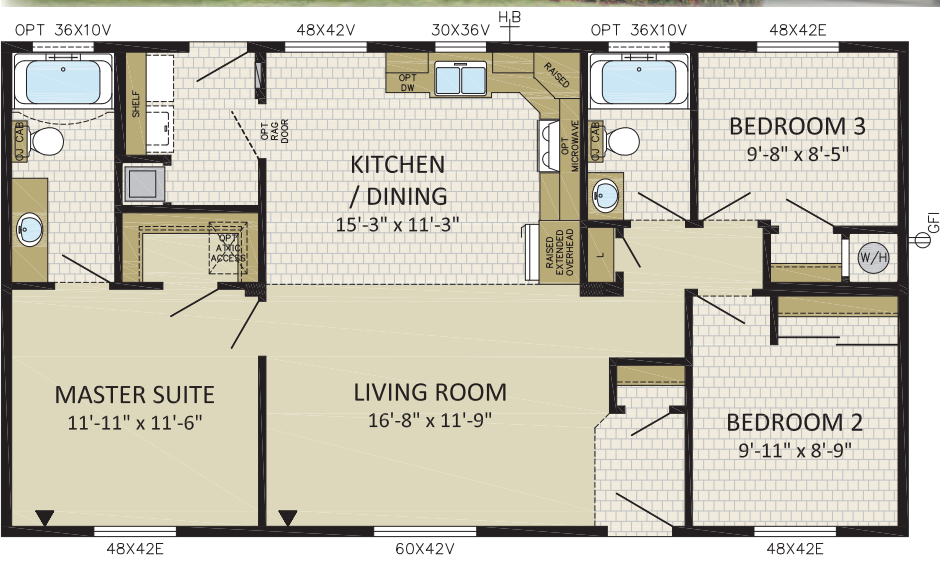
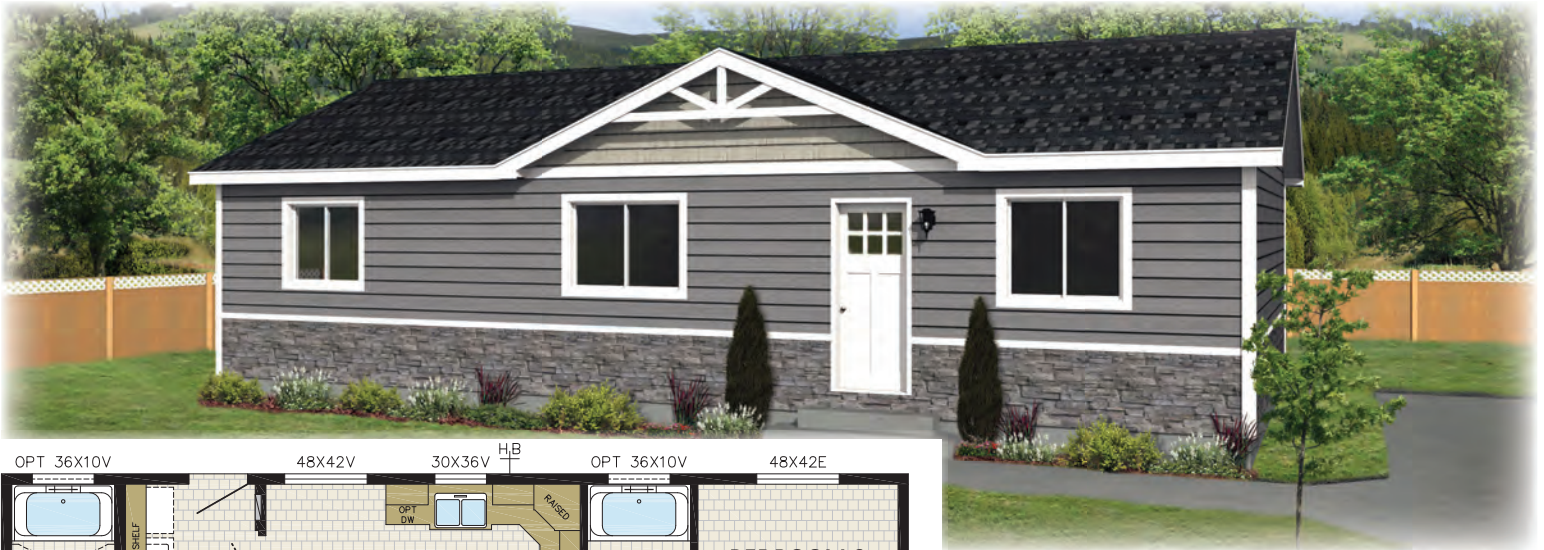
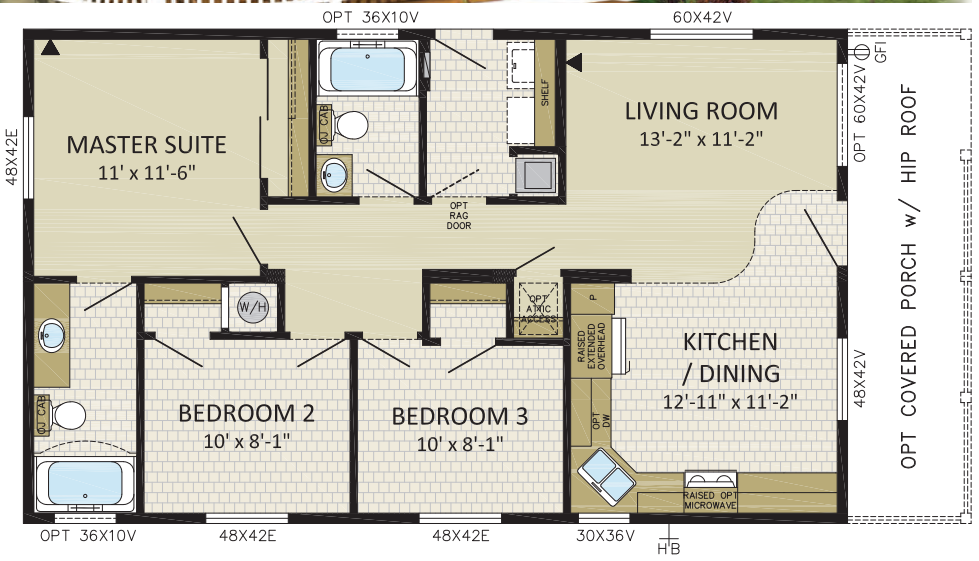




CEDARBERG
 3 BDRMS, 2 BATHS
24CO4002
 24' x 40' | 960 sqft

IMAGE SHOWN WITH OPTIONS:

- LOUISBOURG FRONT DOOR
- OPTIONAL COVERED PORCH w/ HIP ROOF
- FIBER CEMENT SIDING
- 8' BOX BAY w/ FAUX STONE



CARMEL
 3 BDRMS, 2 BATHS
24CO4401
 24' x 44' | 1,056 sqft

IMAGE SHOWN WITH OPTIONS:

- VICTORIA FRONT DOOR
- 5/12 ROOF PITCH
- FIBER CEMENT SIDING w/ FAUX STONE
- 14' DORMER w/ WEB & FIBER CEMENT SHAKES



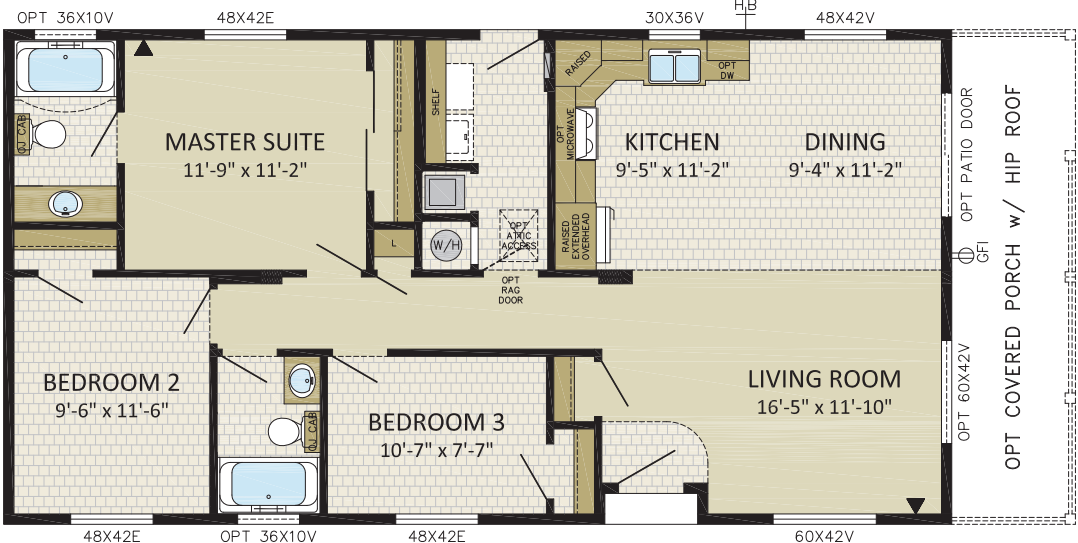
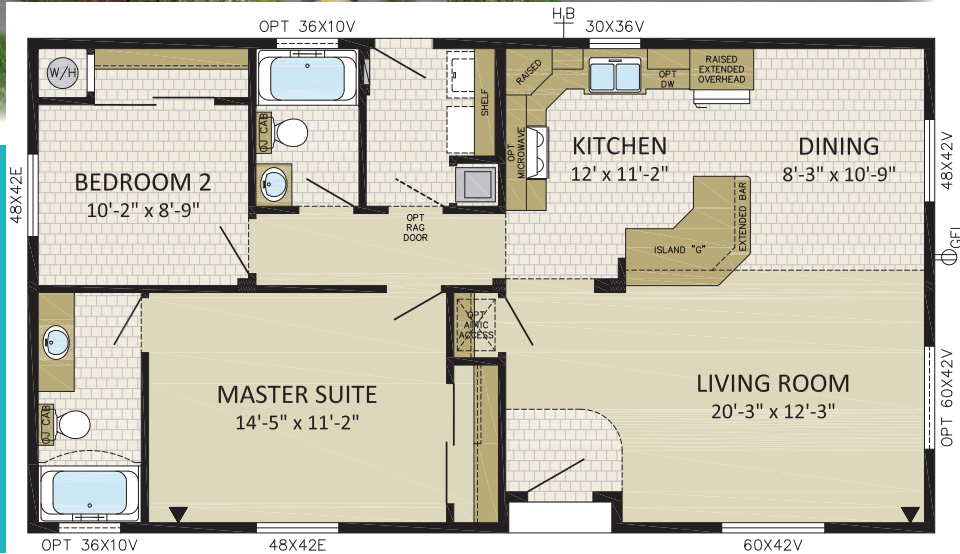
CAMERON

2 BDRMS, 2 BATHS
24CO4402

24' x 44' | 1,056 sqft

IMAGE SHOWN WITH OPTIONS:

- LOUISBOURG FRONT DOOR
- 8' BOX BAY & DORMER W/ FIBER CEMENT SHAKES
- 2' HIP ROOF
- WOLFE CREEK WINDOWS IN MS, LR & DR
- FIBER CEMENT SIDING



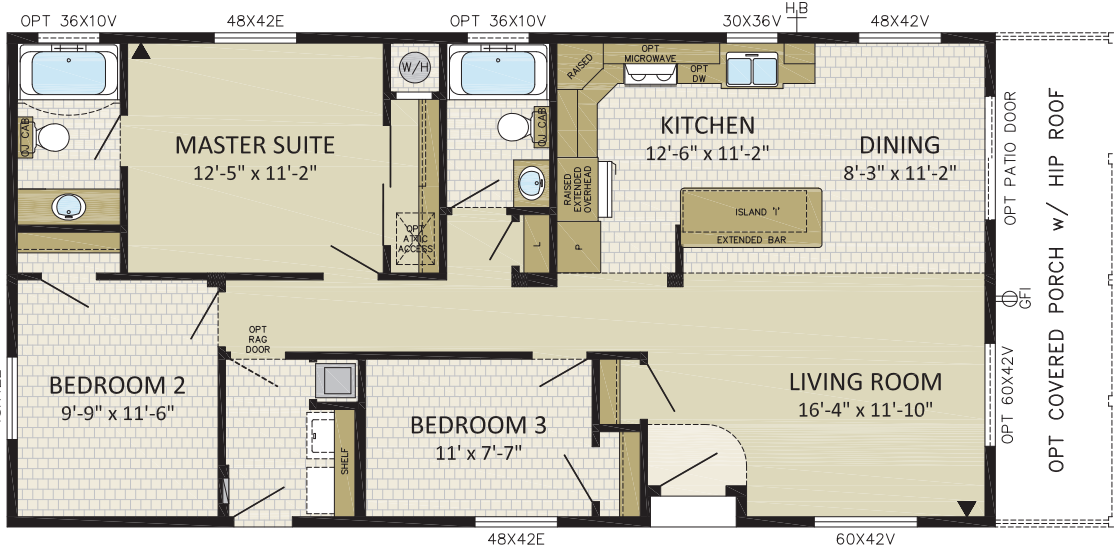
CALDERA

3 BDRMS, 2 BATHS
24CO4601

24' x 46' | 1,104 sqft

IMAGE SHOWN WITH OPTIONS:

- 8' BOX BAY & DORMER W/ FIBER CEMENT SHAKES
- OPTIONAL COVERED PORCH W/ HIP ROOF & PATIO DOOR IN DR
- FIBER CEMENT SIDING
- WOLFE CREEK WINDOWS IN LR, BR #3 & BR #2
- LOUISBOURG FRONT DOOR
- OPT BATH WINDOW



CLINTON
 3 BDRMS, 2 BATHS
24CO4801
 24' x 48' | 1,152 sqft

IMAGE SHOWN WITH OPTIONS:

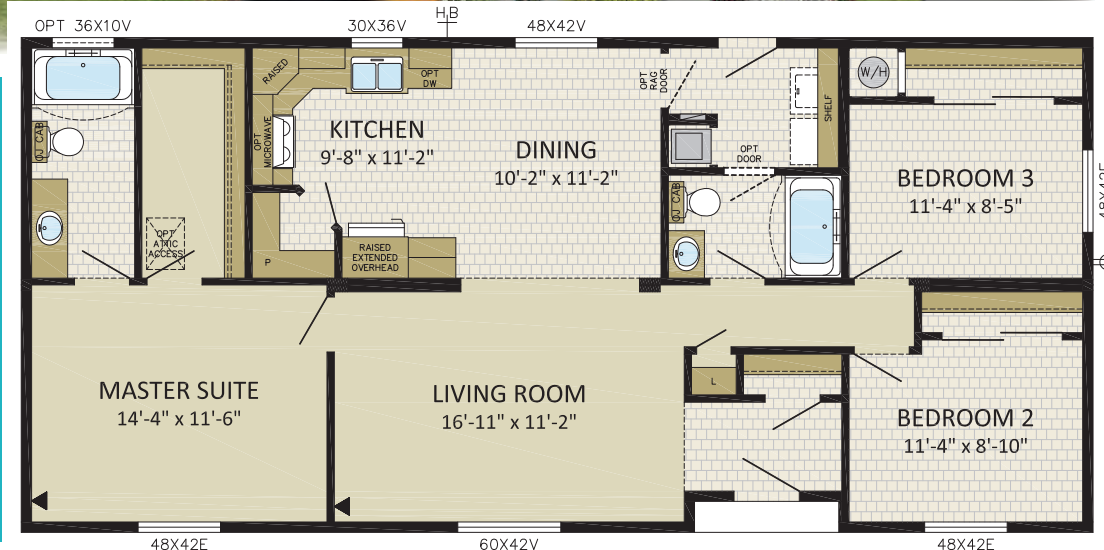
- 9-LITE FRONT DOOR
- OPTIONAL COVERED PORCH w/ GABLE ROOF
- FIBER CEMENT SIDING
- 18' DOUBLE DORMER w/ FIBER CEMENT SHAKES
- 5/12 ROOF PITCH
- GARAGE BY OTHERS



CHARLESTON
 3 BDRMS, 2 BATHS
24CO5201
 24' x 52' | 1,248 sqft

IMAGE SHOWN WITH OPTIONS:

- DOUBLE DORMER WITH FIBER CEMENT SHAKES
- FIBER CEMENT SIDING w/ FAUX STONE
- WOLFE CREEK WINDOWS IN MS, LR, BD#2 & BD#3
- 6/12 ROOF PITCH
- OPT DOOR w/ SIDE LIGHTS

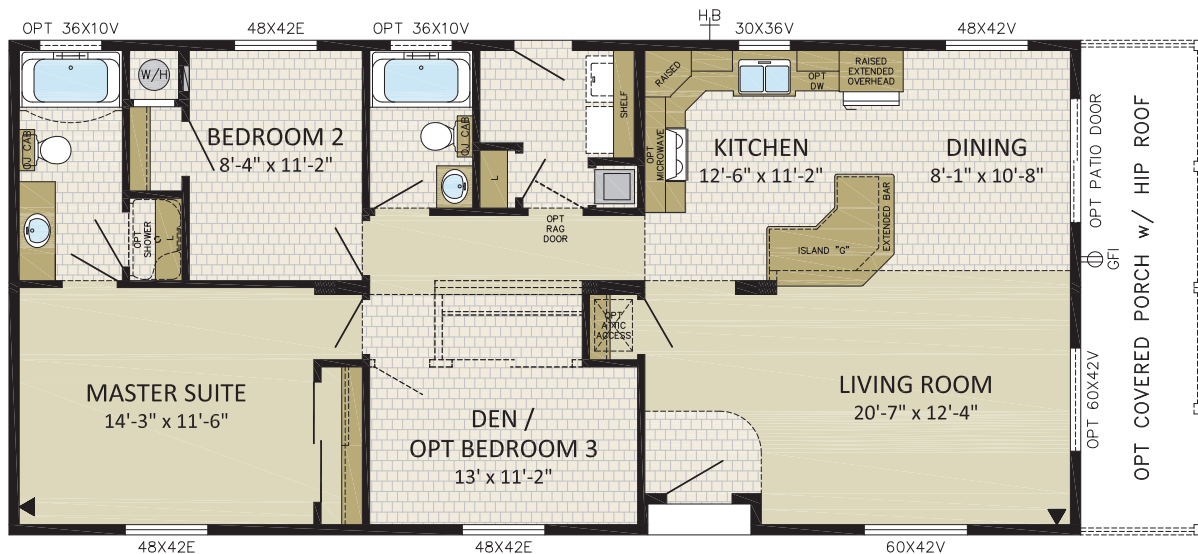




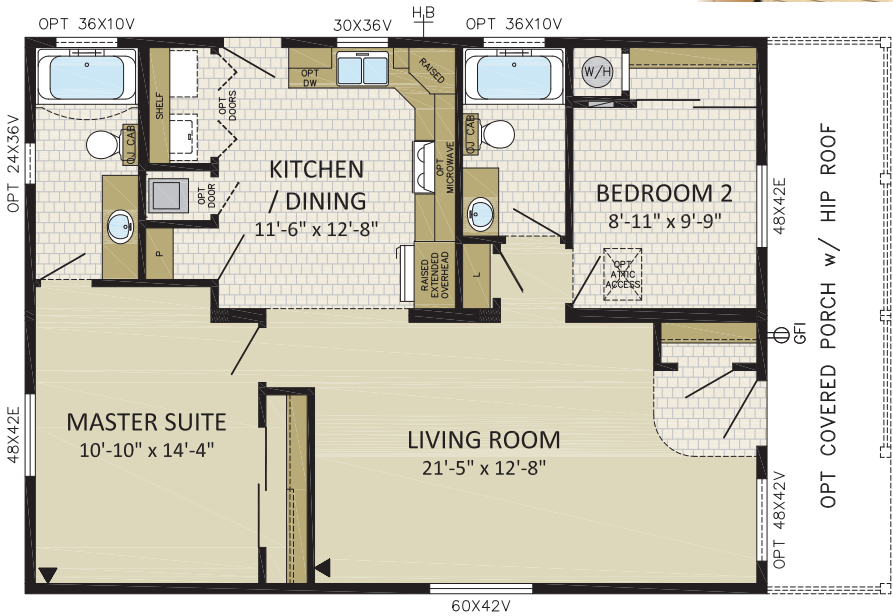
COTTONWOOD
 2 BDRMS, 2 BATHS, DEN
24CO5202
 24' x 52' | 1,248 sqft

IMAGE SHOWN WITH OPTIONS:

- VICTORIA FRONT DOOR
- Two 14' DORMERS WITH FIBER CEMENT SHAKES
- FIBER CEMENT SIDING
- WOLFE CREEK WINDOWS IN LR, DEN & MS
- 6/12 ROOF PITCH

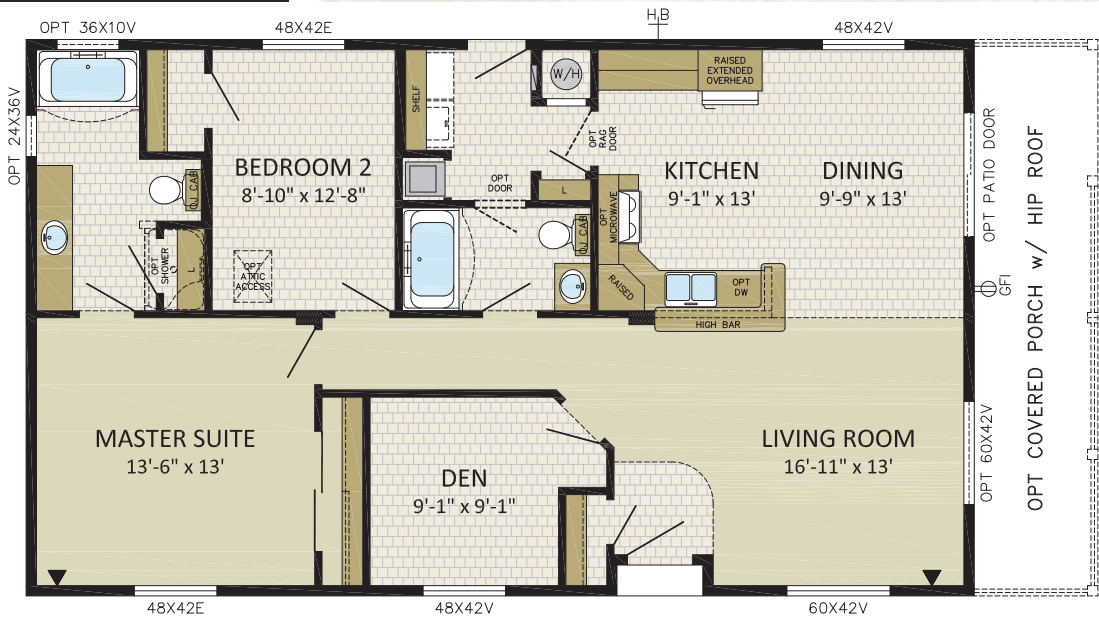


**27'
WIDES**



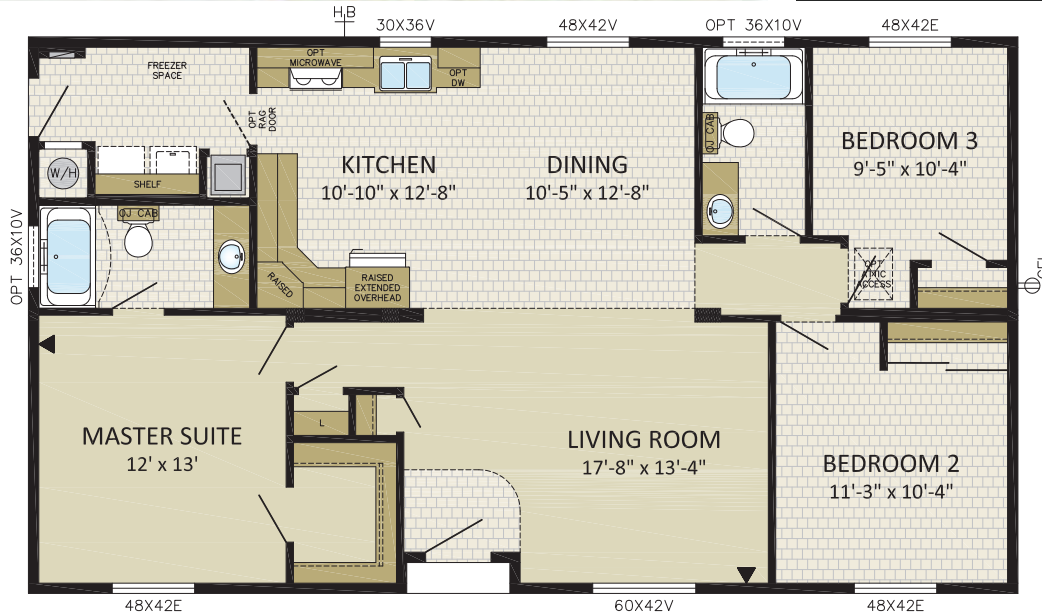
MADRID - 27CO3601
 2 BDRMS, 2 BATHS | 27' x 36' - 972 sqft
IMAGE SHOWN WITH OPTIONS:
 - STAR LIGHT FRONT DOOR
 - OPTIONAL COVERED PORCH w/ HIP ROOF
 - FIBER CEMENT SIDING
 - 5/12 ROOF PITCH

MORGAN
 2 BDRMS, 2 BATHS, DEN
27CO4601
 27' x 46' | 1,242 sqft
IMAGE SHOWN WITH OPTIONS:
 - OPTIONAL COVERED PORCH WITH HIP ROOF
 - FIBER CEMENT SIDING
 - BOX BAY AND DORMER WITH FIBER CEMENT SHAKES
 - 5/12 ROOF PITCH
 - SIDE DECK BY OTHERS





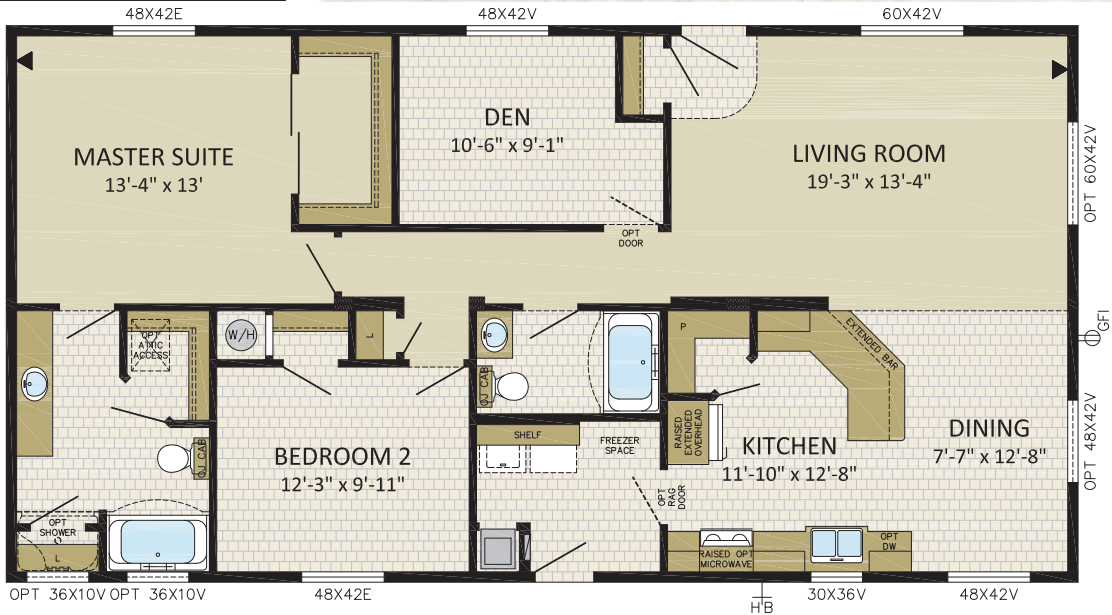
MONARCH
 3 BDRMS, 2 BATHS
27CO4801
 27' x 48' | 1,296 sqft
IMAGE SHOWN WITH OPTIONS:
 - 14' DORMER
 - HORIZON FIBER CEMENT PACKAGE
 - LOUISBOURG FRONT DOOR
 - DECK BY OTHERS



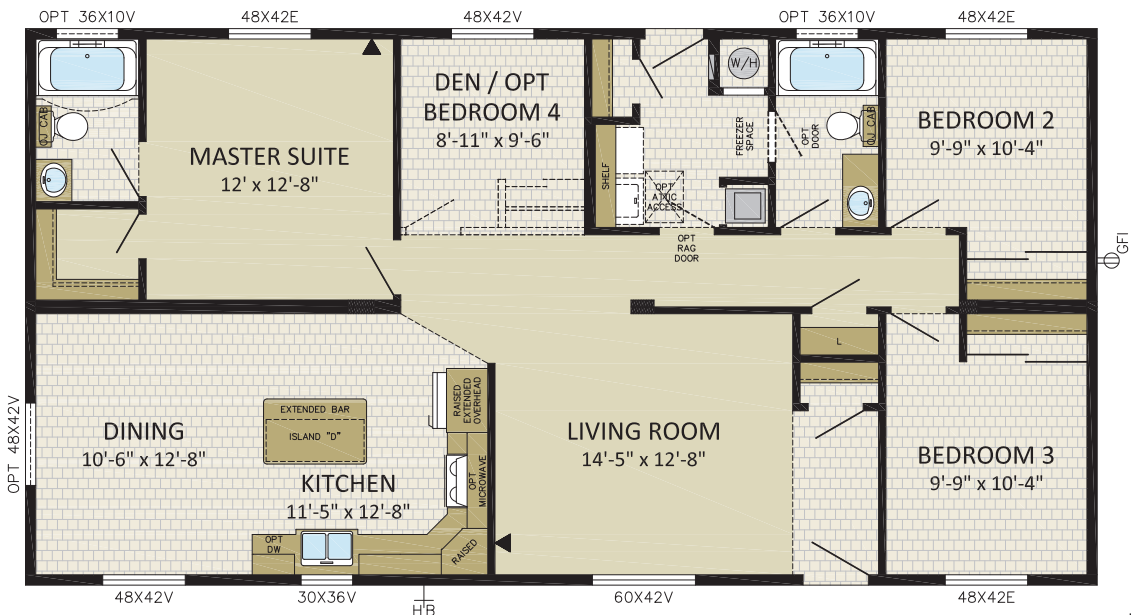
McARTHUR
 2 BDRMS, 2 BATHS, DEN
27CO5001
 27' x 50' | 1,350 sqft
IMAGE SHOWN WITH OPTIONS:
 - BOX BAY WITH FAUX STONE
 - FIBER CEMENT SIDING
 - OPTIONAL COVERED PORCH WITH GABLE ROOF
 - OPTIONAL WINDOWS & PATIO DOOR



MELVILLE
 2 BDRMS, 2 BATHS, DEN
27CO5202
 27' x 52' | 1,404 sqft
IMAGE SHOWN WITH OPTIONS:
 - LOUISBOURG FRONT DOOR
 - 2' HIP ROOF ON END OF HOME
 - HORIZON FIBER CEMENT PACKAGE
 - 18' DOUBLE DORMER



MARTINS
 3 BDRMS, 2 BATHS, DEN
27CO5203
 27' x 52' | 1,404 sqft
IMAGE SHOWN WITH OPTIONS:
 - VICTORIA FRONT DOOR
 - 12' DORMER & BOX BAY W/
 HORIZON FIBER CEMENT PACKAGE
 - FIBER CEMENT SIDING
 - WOLFE CREEK WINDOWS IN DR, LR
 & BD#3



McKINNELLY

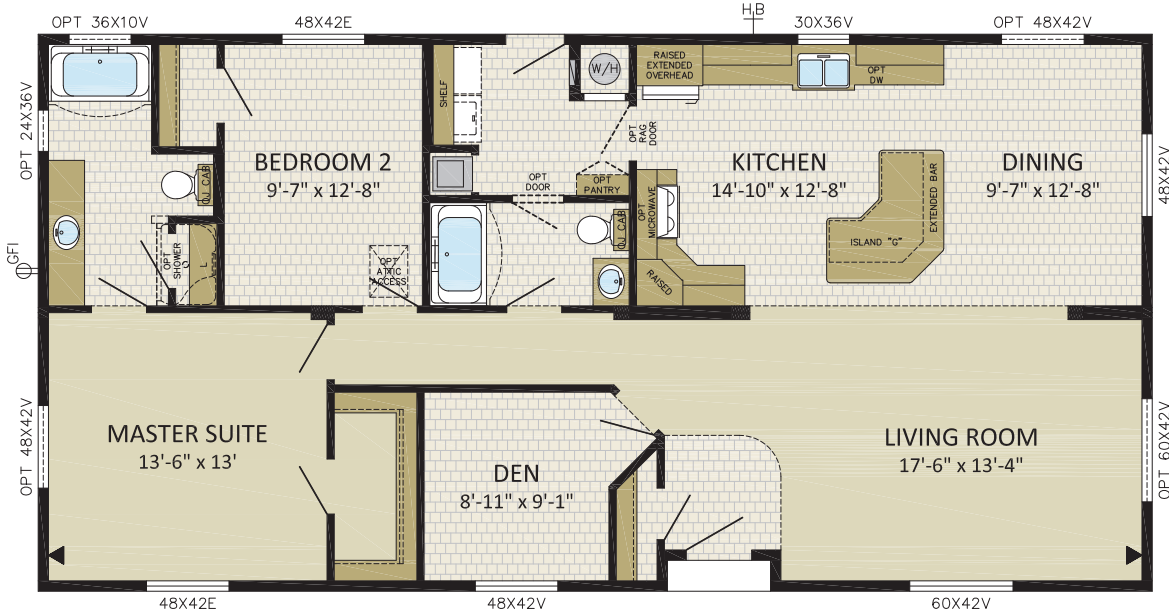
2 BDRMS, 2 BATHS, DEN

27CO5401

27' x 54' | 1,458 sqft

IMAGE SHOWN WITH OPTIONS:

- LOUISBOURG FRONT DOOR
- 8' & 12' DORMERS W/ BOX BAYS & FAUX STONE
- WOLFE CREEK WINDOWS IN MS, LR AND DEN AND DINING



MILAN

3 BDRMS, 2 BATHS

27CO5402

27' x 54' | 1,458 sqft

IMAGE SHOWN WITH OPTIONS:

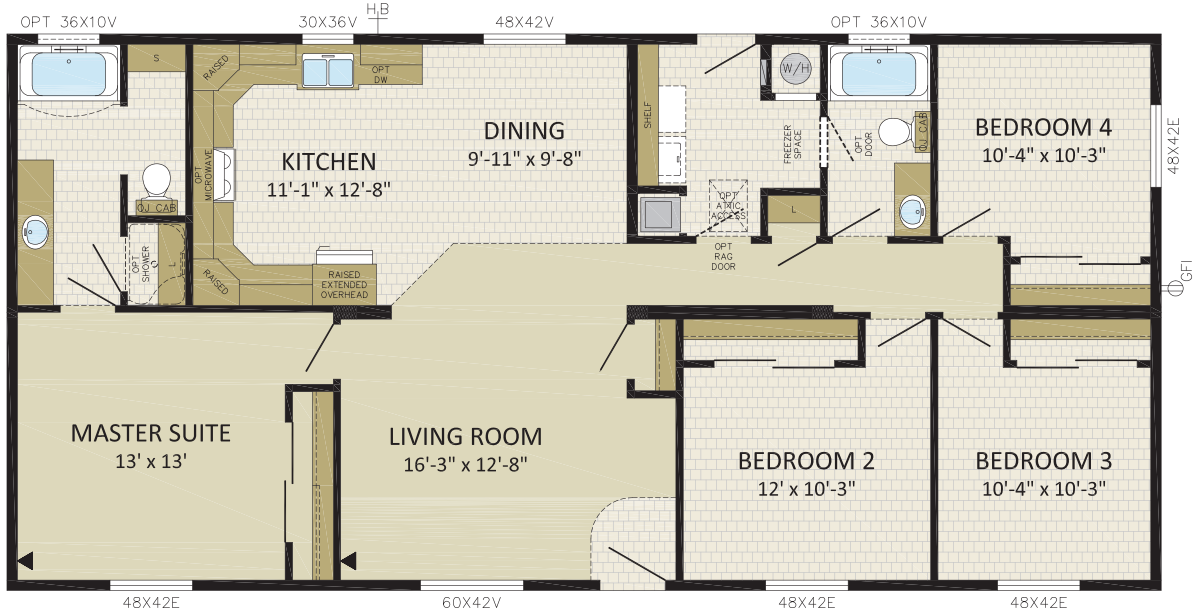
- VICTORIA FRONT DOOR
- SKYVIEW WINDOW PACKAGE
- CORRUGATED METAL SIDING
- FIBER CEMENT SIDING
- OPT 48x60 WINDOWS IN MS & BD#2





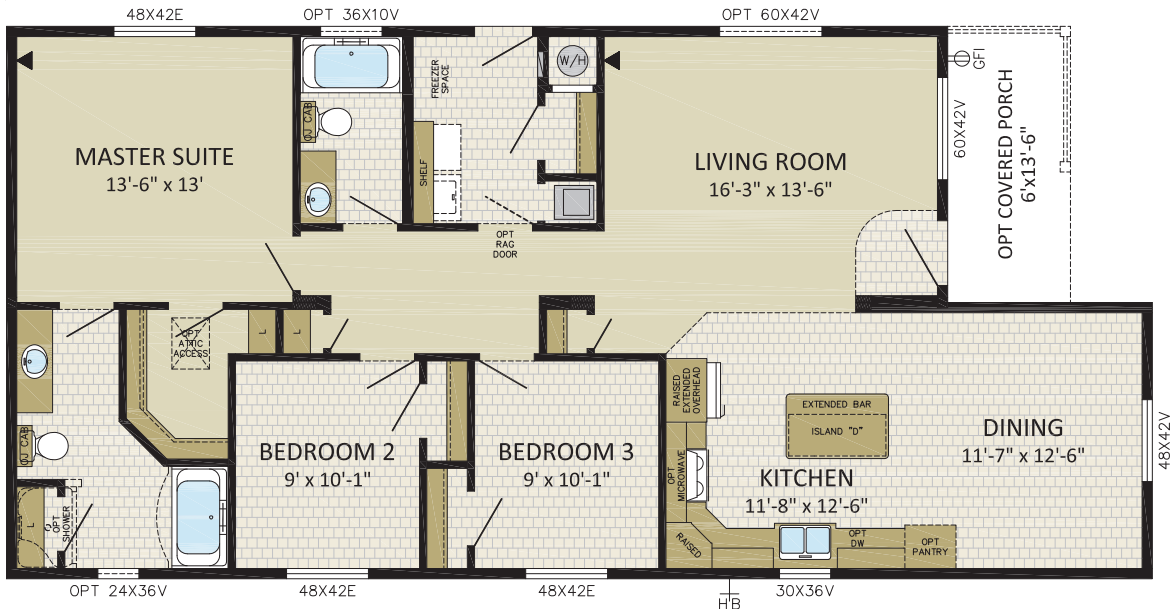
McCurdy
 4 BDRMS, 2 BATHS
27CO5603
 27' x 56' | 1,512 sqft
IMAGE SHOWN WITH OPTIONS:

- LOUISBOURG FRONT DOOR
- 18' DOUBLE DORMER & 12' DORMER
 W/ FIBER CEMENT SHAKES & WEB
- 6/12 ROOF PITCH
- FAUX STONE



MERIDIAN
 3 BDRMS, 2 BATHS
27CO5604
 27' x 46'/56' | 1,377 sqft
IMAGE SHOWN WITH OPTIONS:

- VICTORIA FRONT DOOR
- WOLFE CREEK WINDOWS IN LR & DR
- FIBER CEMENT SHAKES IN GABLES
- 6' HALF PORCH
- GARAGE BY OTHERS



MONACO

3 BDRMS, 2 BATHS
27CO5802

27' x 58' | 1,566 sqft

IMAGE SHOWN WITH OPTIONS:

- VICTORIA FRONT DOOR
- 12' DORMERS W/ VERTICAL METAL SIDING
- PENTAVIEW WINDOW IN LR
- OPTIONAL 36x60 WINDOWS IN MS
- OPTIONAL 48x60 WINDOW IN DR



MANDARA

3 BDRMS, 2 BATHS
27CO6201

27' x 62' | 1,674 sqft

IMAGE SHOWN WITH OPTIONS:

- HORIZON FIBER CEMENT PACKAGE
- 2' STRETCH PORCH W/ HIP ROOF
- WOLFE CREEK WINDOW IN GATHERING ROOM



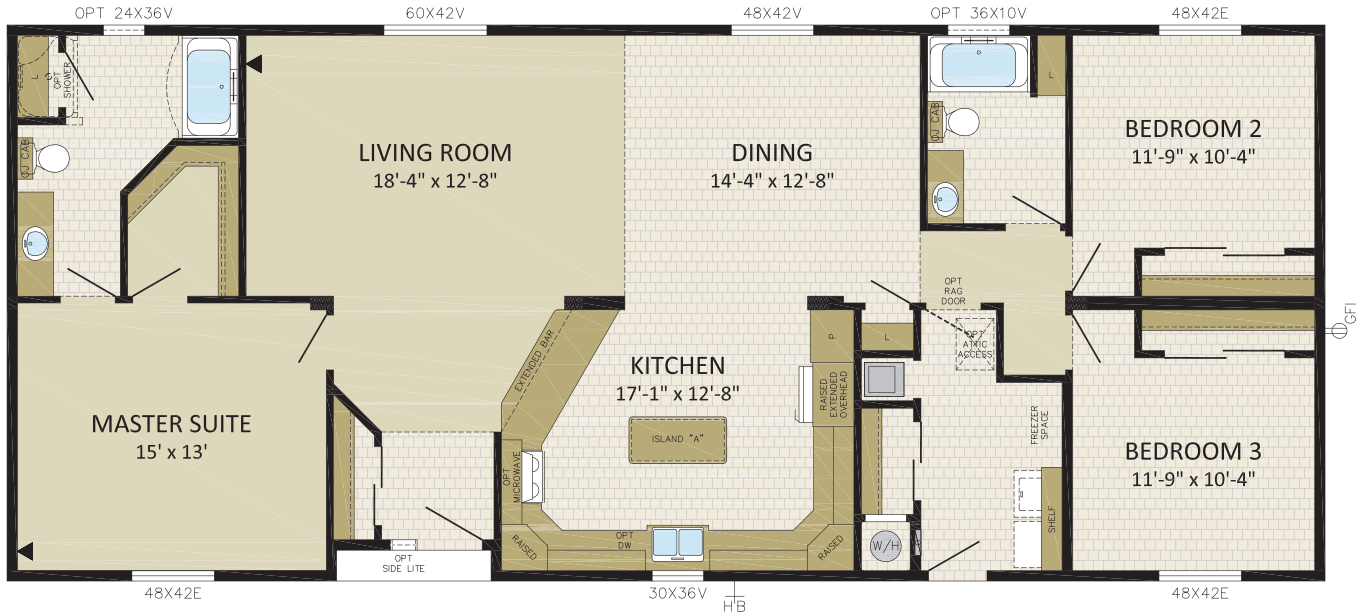
MUNRO

3 BDRMS, 2 BATHS
27CO6401

27' x 64' | 1,728 sqft

IMAGE SHOWN WITH OPTIONS:

- LOUISBOURG FRONT DOOR W/ SIDE LIGHT
- RIPPLE COVE HORIZON PACKAGE
- 8' BOX BAY W/ FAUX STONE
- DOUBLE DORMER W/ SHAKES



MIDWAY

3 BDRMS, 2 BATHS, DEN
27CO6602

27' x 66' | 1,782 sqft

IMAGE SHOWN WITH OPTIONS:

- BOX BAY W/ SHAKES
- LOUISBOURG DOOR W/ 2 SIDE LIGHTS
- WOLFE CREEK WINDOWS
- FIBER CEMENT SIDING
- 18' DOUBLE DORMER W/ SHAKES & WEB
- GARAGE BY OTHERS

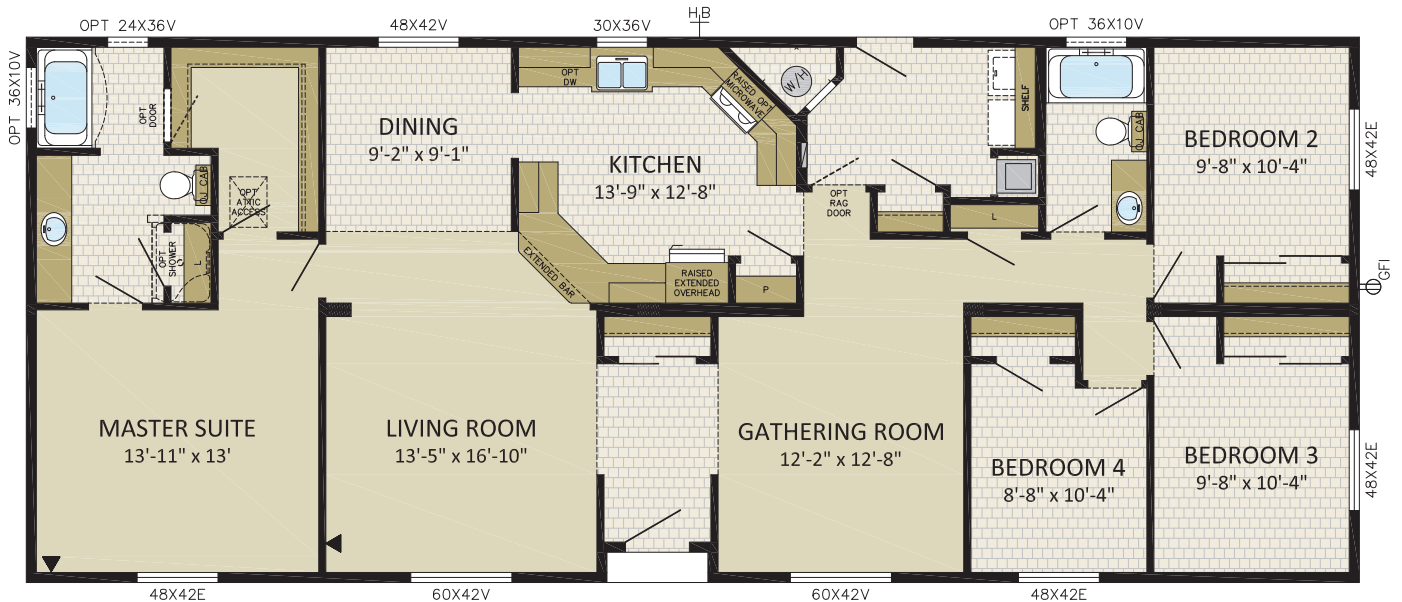




MEDFORD
 4 BDRMS, 2 BATHS
27C06603
 27' x 66' | 1,782 sqft

IMAGE SHOWN WITH OPTIONS:

- VICTORIA FRONT DOOR & WOLFE CREEK WIDOWS
- 24' DORMER W/ 8' BOX BAYS W/ FIBER CEMENT SHAKES
- 5/12 ROOF PITCH
- 20' DORMER W/ FIBER CEMENT SHAKES
- FIBER CEMENT SIDING



**28'-6"
WIDES**



HAYWARD
3 BDRMS, 2 BATHS
286CO5201

28'-6" x 52' | 1,482 sqft

IMAGE SHOWN WITH OPTIONS:

- LOUISBOURG FRONT DOOR
- 20' SHED DORMER WITH BOX BAY
- 2' HIP ROOF ON END OF HOME
- FIBER CEMENT SIDING W/ FAUX STONE
- WOLFE CREEK WINDOWS

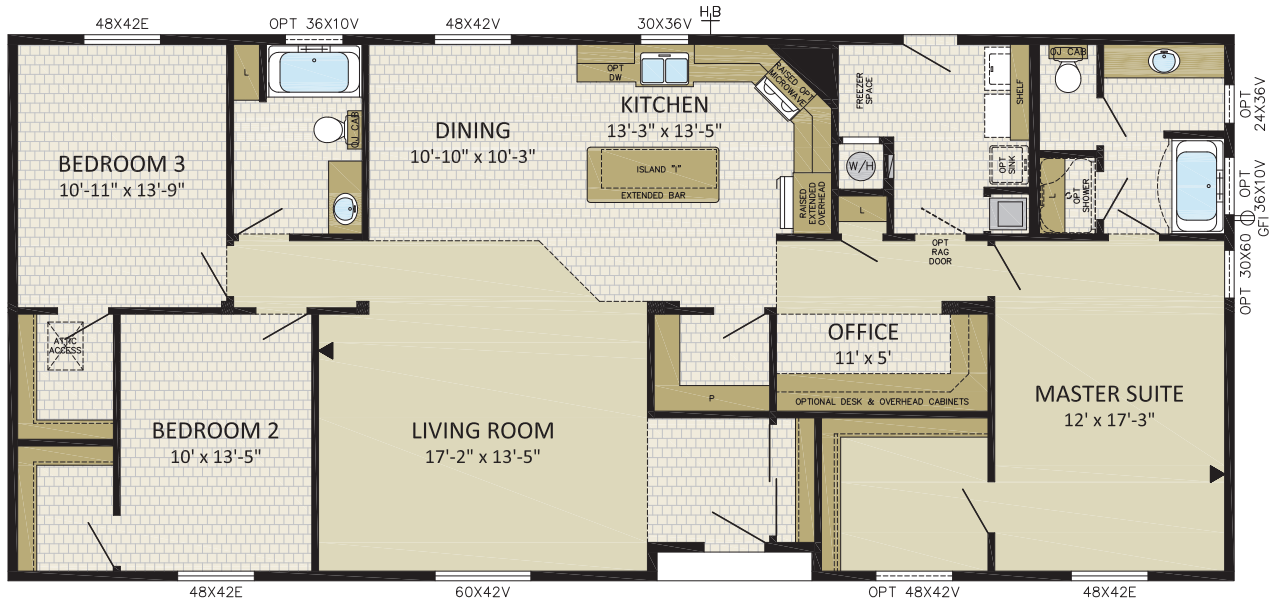




HAWKINS
 3 BDRMS, 2 BATHS
286CO5601
 28'-6" x 56' | 1,596 sqft
IMAGE SHOWN WITH OPTIONS:
 - 20' DORMER W/ FIBER CEMENT SHAKES & WEB
 - 6/12 ROOF PITCH
 - FIBER CEMENT SIDING W/ FAUX STONE
 - WOLFE CREEK WINDOWS
 - GARAGE BY OTHERS



HARRISON
 3 BDRMS, 2 BATHS, OFFICE
286CO6402
 28'-6" x 64' | 1,824 sqft
IMAGE SHOWN WITH OPTIONS:
 - 20' DORMERS W/ WEB
 - HORIZON FIBER CEMENT PACKAGE
 - LOUISBOURG FRONT DOOR W/ SIDE LIGHT
 - OPT. MS CLOSET WINDOW



**30'
WIDES**



HAYES

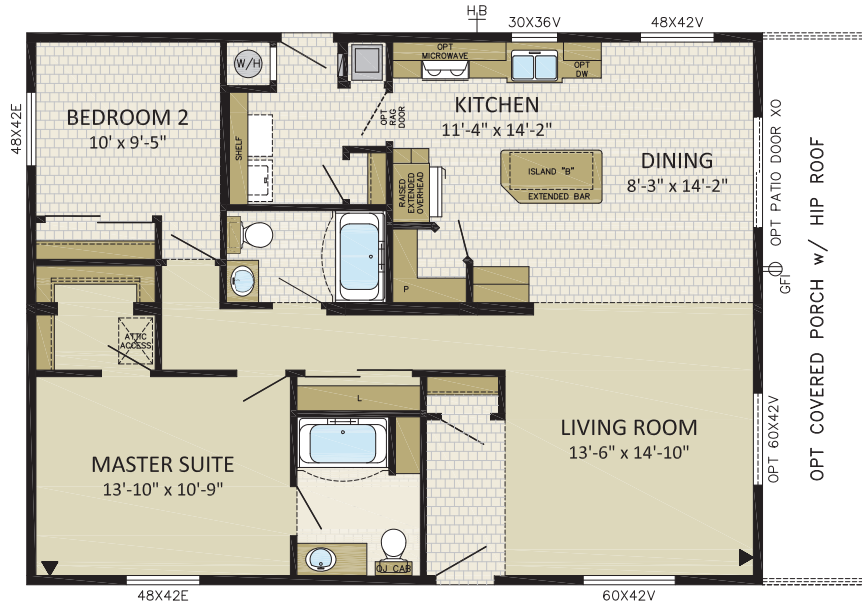
2 BDRMS, 2 BATHS

30CO4001

30' x 40' | 1,200 sqft

IMAGE SHOWN WITH OPTIONS:

- OPTIONAL COVERED PORCH w/ HIP ROOF
- OPTIONAL PATIO DOOR
- 5/12 ROOF PITCH



HADLEY

3 BDRMS, 2 BATHS

30CO5057

30' x 50/57' | 1,605 sqft

IMAGE SHOWN WITH OPTIONS:

- 8' BOX BAY w/ WOLFE CREEK WINDOW & FAUX STONE
- 9 LITE FRONT DOOR
- FIBER CEMENT SIDING w/ FAUX STONE & SHAKE ACCENTS
- OPTIONAL 2' HIPS ON FRONT OF HOME
- GARAGE BY OTHERS



31'-4"
WIDES



HALSTEAD

3 BDRMS, 2 BATHS

314CO4801

31'-4" x 48' | 1,504 sqft

IMAGE SHOWN WITH OPTIONS:

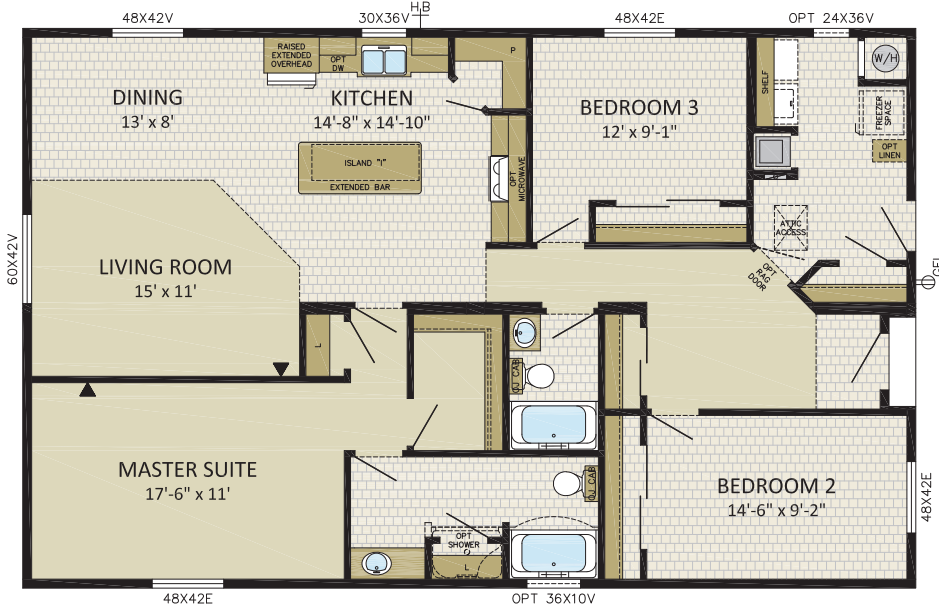
- RIPPLECOVE HORIZON PACKAGE
- 9 LITE FRONT DOOR & OPTIONAL PATIO DOOR
- OPTIONAL COVERED PORCH W/ HIP ROOF
- 12' DORMER W/ FAUX STONE ACCENT





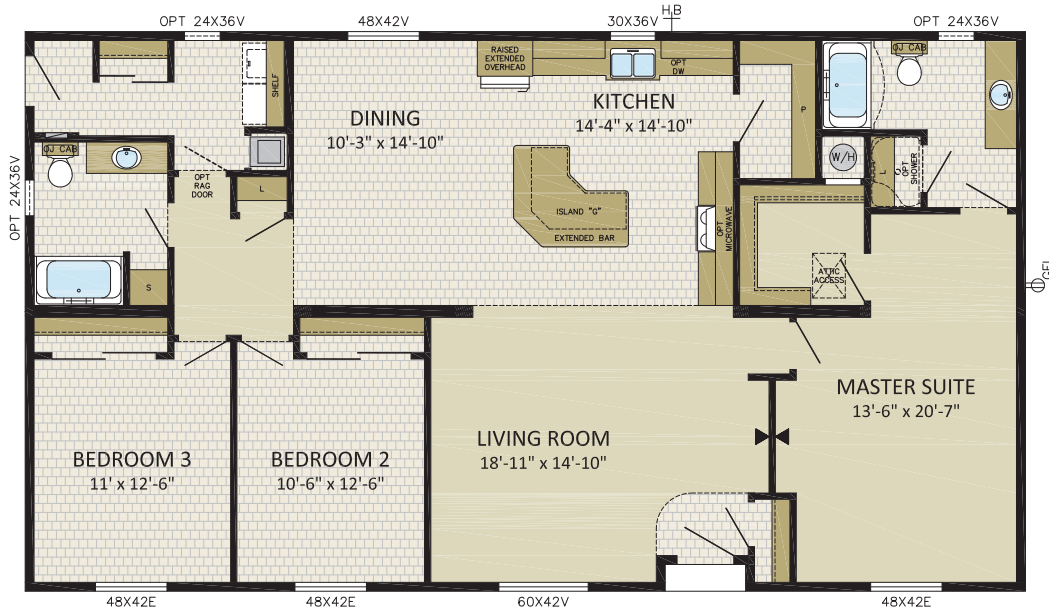
HAMILTON
 3 BDRMS, 2 BATHS
314CO5001
 31'-4" x 50' | 1,567 sqft
IMAGE SHOWN WITH OPTIONS:

- VICTORIA FRONT DOOR
- 8' BOX BAY W/ OPT. WINDOW & SHAKES
- 2' HIP ROOF W/ OPT. SHAKES IN GABLE
- FIBER CEMENT SIDING
- GARAGE BY OTHERS



HILLCREST
 3 BDRMS, 2 BATHS
314CO5601
 31'-4" x 56' | 1,755 sqft
IMAGE SHOWN WITH OPTIONS:

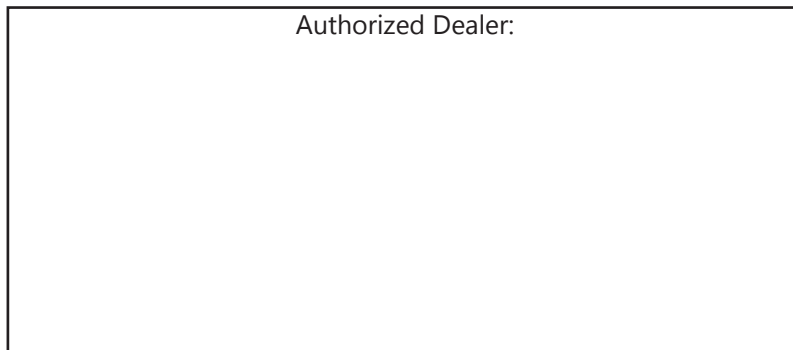
- LOUISBOURG FRONT DOOR
- 14' SHED DORMER WITH BOX BAY
- OPTIONAL WINDOWS
- DECK BY OTHERS




www.modulinepenticton.ca



Authorized Dealer:



a proud supporter of Ronald McDonald House



Moduline
Proudly Built in Canada

1175 Railway Street
Penticton, BC
V2A 5X5

P:250-493-0122
F:250-493-0133

DISCLAIMER:

Due to continuous product development and improvement, prices, specifications, and materials are subject to change without notice or obligation. Square footage and other dimensions are approximate. Included images are artist renderings and are not intended to be an accurate representation of the home. Renderings and floorplans may be shown with optional features or third-party additions. Printed in Canada. 7/23